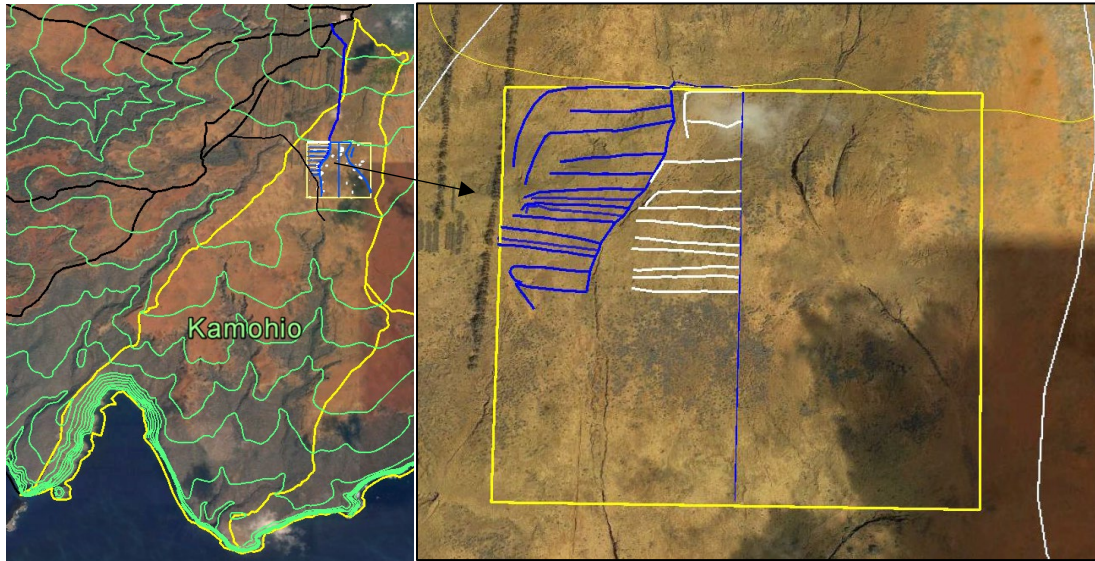


## 1. RESTORATION SUMMARY

### Capital Improvement Project (CIP) Phase II

From November 2019 to August 2020, 11,875 plants were out planted into the CIP II area. The map illustrates the new irrigation lines (white) installed in the CIP II area.



Area of Dryland Forest Project Site in Kamōhio Watershed on Kaho‘olawe

The KIRC staff measured vegetation height on 100 plants in CIP II to determine growth and survival rates. This will serve as baseline data for long term monitoring.

### Post Fire Vegetation Monitoring

Staff installed six fire vegetation plots in Kealialalo, Cistern and Kealaikahiki in April 2020. Vegetation analysis included measuring cover and recording species in the plots. These were also seeded with a‘ali‘i, naio and mao (Hawaiian cotton). Photographs and drone images were taken of these 10m x 10m plots with a 1m x 1m subplot.

Survival rate of mao was also tabulated at Kaukukapapa and Kealaikahiki. The survival rate was 61% with 69 plants surveyed.

Irrigation materials were purchased and stored on island to replenish what was destroyed by the fire at the LZ Squid facility.

The rain catchment roof gutters were cleaned, and the intake was repaired. Restoration staff also controlled brush around the west portion of the structure.



Intake of rain catchment with vegetation in gutter. Cleaning out gutters.

Two new rain gauges were installed on island. One is near the rain catchment and was initiated in January 2020. The other was placed near the Pōkāneloa Stone in February 2020. Also, a stream stage monitoring device was installed in the Kaneloa stream (near the Pōkāneloa Stone) in January 2020 to measure height of the stream water when it rains. This stream data will be correlated to the rain gauge data.



New rain gauge at Rain Catchment at Luamakika (January 2020)



New rain gauge near Pōkāneloa Stone (February 2020)

### ***Kanaloa kahoalawensis* seedlings**

Twenty-two seedlings of *K. kahoalawensis* were recently established in April 2020 at Ho‘olawa Farms.



Twenty-two seedlings of *K. kahoalawensis* at Ho‘olawa Farms

Although the large individual plant at Ho'olawa Farms died in July 2020 the pollen it produced helped to establish these twenty-two seedlings. The Kanaloa Management Plan was updated with peer review to include a tracking table for the new seedlings. Hurricane Douglas prompted personnel from the KIRC, PEPP and Ho'olawa farms to install a temporary protective barrier (July 25, 2020).



Protective barrier being installed at Ho'olawa Farms for Hurricane Douglas

The KIRC Restoration staff were at the Maui Ocean Center exhibit through February 2020 answering questions for visitors. The Restoration Staff secured a 1-year Hakioawa Operations and Maintenance grant from the DOH, Clean Water Branch and are awaiting signing the contract and receiving the Notice to Proceed date. Staff submitted Kamōhio Watershed Plan to the DOH (Clean Water Branch) in June 2020 and are awaiting its review.

The Restoration Program was also able to secure a small grant from the Atherton Foundation via Island Conservation. The grant project aims to reconvene the Kaho'olawe Island Seabird Restoration Project Steering Committee to develop an invasive mammal eradication feasibility study.