



Kaho'olawe Island Reserve Commission

COMMISSION PROJECTS UPDATE

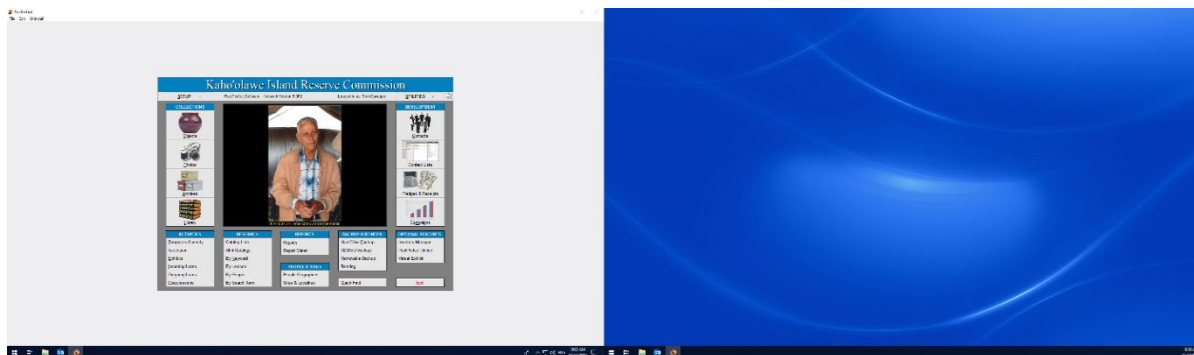
November 2020-August 2020

KIRC Virtual Museum-Stage 3: Collaborations & Special Collections

The Kaho'olawe Island Reserve Commission was awarded a grant of \$75,000 from the Institute of Museum and Library Services' (IMLS) Native American/Native Hawaiian Museum Services Program on June 15, 2018. This two-year project runs from August 1, 2018 to July 31, 2021 and focuses on:

- 1) Reorganization of the KIRC Archive Room
- 2) Expansion of data in the KIRC Living Library database
- 3) Rehousing of part of the "Navy" special collection (Navy Collection)—a collection originally given to DLNR by the Navy and placed with the Maui Historical Society on loan in 1981; the KIRC acquired the collection in February 2011
- 4) Evaluation, procurement and installation of improved software for the KIRC Living Library

The Archive has been expanded to include an additional room. PastPerfect Online software has been procured and staff has exported data for the photos cataloged in the current Museum Archive program used for the KIRC Living Library website to PastPerfect Online. Once data and images are inputted into PastPerfect Online database the data can be published on a website hosted by PastPerfect. Staff is in the process of linking the individual images and additional data to the imported records. The website will be further refined once this export is completed.



PastPerfect Database Home Screen



Kaho'olawe Island Reserve Commission



https://kirc.pastperfectonline.com/

Kaho'olawe Island Reserve Commission
Online Collections

Home Keyword Search Advanced Search Random Images Archives Photos Libraries Objects

Welcome to our Online Collections Database!

Tips for Searching

Keyword Search

The **Keyword Search** button allows you to perform a general search across multiple fields for any catalog records online. Keyword searches use OR as the default connector between words (e.g. a search for *Hanley Ranch* will return records associated with *Hanley OR Ranch*). If you want to find records where both keywords are found, type in AND between the two words. To search for a specific phrase, be sure to put the phrase within quotes (e.g. "Rocky Pine Ranch"). You can also use the asterisk (*) as a wildcard (e.g. a search for *histor** would come up with records containing *history, histories, historical, etc.*). Searches are not case sensitive.

Advanced Search

The **Advanced Search** button can help you be more specific with your search. You can search for a word or phrase within a particular search category or use multiple categories to further narrow down your search results. For example, searching *White* in the *People* field will bring up any records associated with a member of the *White* family, without having to sift through black & white photographs. You can also search *People* and *Creator* records through *Advanced Search*. Phrase searching with quotes and use of wildcards (*) are available in *Advanced Search*.

Random Images

The **Random Images** button is a great way to just browse the collection. Each *Random Images* page displays a random assortment of images from the records online. If something piques your interest, click the thumbnail to view a larger version of the image.

Catalog Searches (Archives / Photos / Libraries / Objects)

10:36 AM 11/12/2019

PastPerfect Online Home Page for KIRC

https://kirc.pastperfectonline.com/webobject/F1AE6875-3324-40C5-A68E-893056269821

Kaho'olawe Island Reserve Commission
Online Collections

Home Keyword Search Advanced Search Random Images Archives Photos Libraries Objects

Object Record [Return To Search Results](#) [Email to a Friend](#) [Send Us Feedback](#)

	Object Name	Lure
	Description	Partially damaged cowrie shell (leho) lure
	Catalog Number	2015.006.183
	Other number	HMR 172A-1.33
	Date	Unknown
	Site # and feature	172A
	Width (cm)	5.08
	Material	Shell
	Count	1
	Status	Awaiting Processing

10:37 AM 11/13/2019

PastPerfect Online Website Object Record Page



Kaho'olawe Island Reserve Commission

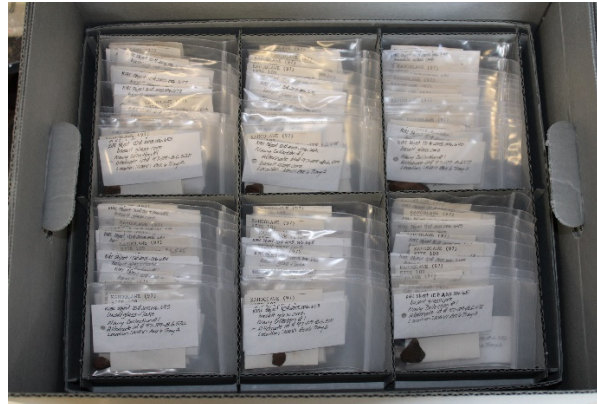
COMMISSION PROJECTS UPDATE

With the advent of COVID-19 and the resulting health and safety measures, staff has been working at home as well as in the office. The staff has started rehousing artifacts and samples in the Navy Collection. This entails:

- Completion of data entry form for the PastPerfect database
- Digitally photographing item from various angles along with artifact slips (if applicable)
- Printing artifact/sample information on Tyvek label tags to include with the item
- Placing item and tags in an appropriate polypropylene bag
- Placing the bag in an archival safe



Samples from Navy Collection in original container



Rehoused Navy Collection