

**STATUS OF BILLS RELATING TO KAHO`OLAWE
HAWAII STATE LEGISLATURE – 2019 REGULAR SESSION**

Nov 4, 2019

KAHO`OLAWE NATIVE DRYLAND FOREST

HB454 Relating to the Kaho`olawe Island Reserve (Dryland Forest Funding) (DEAD)

Submitted by: Yamane, Aquino, Cullen, DeCoite, Hashimoto, McKelvey, Wildberger, Yamashita, Woodson

Purpose: Appropriates funds to the Department of Land and Natural Resources to support native dryland forest restoration, management, and maintenance on Kaho`olawe Island Reserve.

SD1: Moves language detailing appropriation from purpose to appropriation section

HD1: Defects the date and blank the funding

Status: Pending Hearing by WAM

01/22/19 Introduced and Passed First Reading
01/22/19 Referred to WLH/EEP, FIN
02/06/19 Hearing by WLH/EEP, measure passed with amendments
02/15/19 Passed second reading and referred to FIN
02/20/19 Hearing by FIN, measure passed unamended
02/28/19 Passed third reading and transmitted to Senate
03/01/19 Passed first reading in House
03/05/19 Referred to WTL, WAM
03/11/19 Hearing by WTL, measure passed with amendments
03/15/19 Passed second reading and referred to WAM

KIR SPECIALIST AND OPS FUNDING

HB455 Relating to the Kaho`olawe Island Reserve Commission (KIR and Ops Funding) (DEAD)

Submitted by: Yamane, Cullen, DeCoite, Har, Wildberger, Woodson

Purpose: Appropriates funds to the Department of Land and Natural Resources for support of the Kahoolawe Island Reserve Commission, including 2 full-time equivalent (2.0 FTE) permanent positions.

HD1: Defects the date and blanks the funding

Status: Pending hearing by WAM

01/22/19 Introduced and Passed First Reading
01/22/19 Referred to WLH, FIN
01/30/19 Hearing by WLH, measure passed with amendments
02/08/19 Passed second reading and referred to FIN
02/26/19 Hearing by FIN, measure passed unamended
03/01/19 Passed third reading and transmitted to Senate
03/05/19 Passed first reading in House
03/05/19 Referred to WTL, WAM
03/11/19 Hearing by WTL, measure passed unamended
03/15/19 Passed second reading and referred to WAM

SB1296 Relating to the Kaho`olawe Island Reserve Commission (KIR and Ops Funding) (DEAD)

Submitted by: Shimabukuro, Inouye,

Purpose Appropriates funds to the Department of Land and Natural Resources for support of the Kahoolawe Island Reserve Commission, including 2 full-time equivalent (2.0 FTE) permanent positions.

SD1: Defects the date and blanks the funding
Status: Pending hearing by WLH
01/24/19 Introduced and Passed First Reading
01/28/19 Referred to WTL, WAM
02/06/19 Hearing by WTL, measure passed with amendments
02/13/19 Passed second reading and referred to WAM
02/25/19 Hearing by WAM, measure passed unamended
03/01/19 Passed third reading
03/07/19 Passed first reading in House, referred to WLH, FIN

TRANSFER KIHEI SBH TO KIRC

HB458 Relating to Small Boat Harbors (Transfer Kihei to KIRC) (DEAD)

Submitted by: Yamane, Aquino, Cullen, Decoite, Har, Hashimoto, Lowen, McKelvey, Todd, Yamashita

Purpose: Authorizes the Board of Land and Natural Resources to transfer the operation, administration, management, and maintenance of the Kihei Small Boat Harbor, with some exceptions, to Kaho`olawe Island Reserve Commission. Authorizes the Kaho`olawe Island Reserve Commission to undertake those duties.

HD1: Specify transfer launch ramp, change effective date
Status: **Measure Dead**
01/22/19 Introduced and Passed First Reading
01/22/19 Referred to WLH, TRN, FIN
01/25/19 Hearing by WLH, measure passed with amendments
01/29/19 Measure passed second reading and referred to TRN
02/08/19 Hearing by TRN, measure passed unamended
02/13/19 TRN referred to FIN

DLNR FUNDING

HB896 Relating to the Department of Land and Natural Resources State Budget (DLNR Base) (DEAD)

Submitted by: Yamane, Luke

Purpose: Appropriates funds for the fiscal biennium 2019-2021 operating budget of the Department of Land and Natural Resources programs under the purview of the House of Representatives Standing Committee on Water, Land, and Hawaiian Affairs.

SD1: Strips dollar amount from each line item

HD2: Adjustment to budget items, no effective change to KIRC
HD1: Adjustments to budget items, includes KIRC baseline positions and funding
Status: Pending WAM hearing
01/24/19 Introduced and Passed First Reading
01/28/19 Referred to WLH, FIN
02/08/19 Hearing by WLH, decision making deferred until 02/13/19
02/13/19 Decision making by WLH, measure passed with amendments
02/15/19 Passed second reading and referred to FIN
02/25/19 Hearing by FIN, measure passed with amendments
03/01/19 Passed third reading
03/07/19 Passed first reading in Senate, referred to WTL, WAM
03/13/19 Hearing by WTL. Passed with amendments
03/20/19 Passed second reading and referred to WAM

HB1405 Relating to the Department of Land and Natural Resources Budget (LNR 906 Appropriation) (DEAD)
Submitted by: Yamane

Purpose: Adjusts the operating budget for the fiscal biennium 2019-2021 operating budget of certain Department of Land and Natural Resources programs under the purview of the House of Representatives Standing Committee on Water, Land, and Hawaiian Affairs.

SD2: Effects the date to 7/1/2050
SD1: Effects the date to 7/1/2019
HD2: Adjustment to budget, did not include KIRC CRPC position because did not specify KIRC
HD1: Adjustment to budget
Status: Pending conference committee
01/24/19 Introduced and passed First Reading
01/28/19 Referred to WLH, FIN
02/08/19 Hearing by WLH, decision making deferred until 02/13/09
02/13/19 Decision making by WLH, measure passed with amendments
02/15/19 Passed second reading and referred to FIN
02/25/19 Hearing by FIN, measure passed with amendments
03/01/19 Passed third reading
03/07/19 Passed first reading in senate and referred to WTL, WAM
03/13/19 Hearing by WTL, measure passed with amendments
03/20/19 Passed second reading, refereed to WAM
04/01/19 Decision making by WAM, measure passed with amendments
04/05/19 Passed third reading
04/23/19 House Conferees appointed: Yamane, Todd (Co-chair), Thielen
Senate Conferees appointed: Kahele, Keith-Agaran (Co-Chair), Favella
04/25/19 Conference Committee meeting

SB924 Relating to the Department of Land and Natural Resources (LNR 906 Appropriation)

(DEAD)

Submitted by: Kahele

Purpose Appropriates funds for operating expenses of the department of land and natural resources.

SD2: Blanks dollar amounts, keeps KIRC CRPC position
SD1: Accepts comments made by department and defects date
Status: Pending crossing to House
01/22/19 Introduced and passed First Reading
01/24/19 Referred to WTL, WAM
02/01/19 Hearing by WTL, measure passed with amendments
02/12/19 Passed second reading and referred to WAM
02/28/19 Hearing by WAM, measure passed with amendments
03/01/19 Passed third reading
03/07/19 Passed first reading in House, referred to WLH, FIN

STATE BUDGET

HB2 Relating to State Budget (PASSED)

Submitted by: Saiki, Luke

Purpose: Appropriates funds for the operating budget of the Executive Branch for fiscal years 2019-2020 and 2020-2021. (KIRC Funding D.9)

CD1: Keeps KIRC 15.0 FTE base funding, but takes out CRPC and \$100,000
SD1: Adds in base funding for KIRC and CRPC and \$100,000 from Act 140
HD1: Removes programs and appropriations for further evaluation
Status: Signed into law
01/17/19 Introduced and passed First Reading
01/18/19 Referred to FIN
01/23/19 Hearing by FIN, measure passed with amendments
01/29/19 Passed second reading
01/31/19 Passed third reading, transmitted to House
02/01/19 Passed first reading in Senate and referred to WAM
03/11/19 Hearing by WAM, measure passed with amendments
03/13/19 Passed second reading
03/15/19 Passed third reading, returned to House
03/18/19 House disagrees with amendments, appoints conference committee: LUKE, Cullins, Eli, Gates, Hashimoto, Holt, Kitagawa, B. Kobayashi, Matayoshi, Nakamura, Nishimoto, Todd, Wildberger, Yamashita, McDermott
03/19/19 Senate appoints conference committee; DELA CRUZ, KEITH-AGARAN, English, Harimoto, Inouye, Kahele, Kanuha, Kidani, Moriwaki, Riviere, Shimabukuro, Taniguchi, Fevella

- 03/20/19 Hearing by Conference Committee, House and Senate conferees recommend the measure pass with amendments
- 03/27/19 Passed final reading, transmitted to Governor
- 04/15/19 Signed by Governor as Act 005

HB116 Relating to State Budget (PASSED)

Submitted by: Luke

Purpose: Appropriates funds for the operating budget of the Executive Branch for fiscal years 2019-2020 and 2020-2021. (KIRC Funding D.9)

CD1: Adds funding for CRPC and \$100,000 for FY2020

SD1: Adds funds for DLNR, none specified for KIRC

Status: Pending Governor's signature

- 01/18/19 Introduced and passed first reading, referred to FIN
- 02/22/19 Hearing by FIN, measure passed, unamended
- 02/28/19 Passed second reading
- 03/01/19 Passed third reading, transmitted to senate
- 03/05/19 Passed first reading, referred to WAM
- 03/11/19 Hearing by WAM, passed with amendments
- 03/13/19 Passed second reading
- 03/15/19 Passed third reading
- 03/18/19 House conferees appointed: Luke (Chair), Cullen, Eli, Gates, Hashimoto, Holt, Kitagawa, Kobayashi, Matayoshi, Nakamura, Nishimoto, Todd, Wildberger, Yamashita, McDermott.
- 03/19/19 Senate conferees appointed: Dela Cruz (Chair), Keith Agaran (Co-Chair), English, Harimoto, Inouye, Kahele, Kanuha, Kidani, Moriwaki, Riviere, Shimabukuro, Taniguchi, Fevella
- 04/25/19 Conference committee recommends measure passes with amendment
- 05/01/19 Transmitted to Governor

COMMISSION APPOINTMENTS

GM688 Appointment of Joshua Kaakua (PASSED)

Status: Pending confirmation hearing

- 03/28/19 Referred to WTL
- 04/12/19 Hearing by WTL

						Department Requests						B&F Recommendation						Department Appeal						
						FY20			FY21			FY20			FY21			FY20			FY21			
Req Cat	B&F Code	Prog ID/Org	Dept Pri	Description	MO F	FTE (P)	FTE (T)	\$ Amount	FTE (P)	FTE (T)	\$ Amount	FTE (P)	FTE (T)	\$ Amount	FTE (P)	FTE (T)	\$ Amount	FTE (P)	FTE (T)	\$ Amount	FTE (P)	FTE (T)	\$ Amount	Comments
KAHOOLAWE ISLAND RESERVE COMMISSION (KIRC)																								
SY		LNR 906AA	19	Add funds for other operating expenditures (\$100,000) per provisions from Act 140, SLH 2018 (KIRC)	A						100,000						100,000						-	
OR		LNR 906AA	67	Additional operating funds for health and safety management of Kaho`olawe Base Camp and KIRC Landing Craft	A						500,000						-						500,000	
OR		LNR 906AA	68	Add position and funds for the personal services of one (1) Kaho`olawe Island Reserve Specialist III to support the Kaho`olawe Island Reserve Commission's boat operations and logistics program. FY21: \$35,000	A				1.00		17,500				-		-				1.00		17,500	

**FY 21 SUPPLEMENTAL BUDGET
OPERATING BUDGET ADJUSTMENT REQUEST
DEPARTMENT OF**

Department Priority: KIRC 1

Program ID/Org. Code: LNR 906AA
Program Title: KIRC

Department Contact: Michael Nahoopii

Phone: 3-5020

Request Category:

- Trade-Off/Transfer (+)___ (-) ___
- Conversion of Unbudgeted Positions _____
- Fixed Cost/Entitlement _____
- Federal Fund Adjustment _____
- Governor's Initiatives _____
- Health, Safety, Court Mandates _____
- Full Year Funding for New Positions _____
- Second Year Funding X_____
- Other _____

I. TITLE OF REQUEST:

Description of Request:

II. OPERATING COST SUMMARY

	FY 20 Request			FY 21 Request			FY 22	FY 23	FY 24	FY 25
	FTE (P)	FTE (T)	(\$)	FTE (P)	FTE (T)	(\$)	(\$ thous)	(\$ thous)	(\$ thous)	(\$ thous)
A. Personal Services										
B. Other Current Expenses						100,000	100	100	100	100
C. Equipment										
L. Current Lease Payments										
M. Motor Vehicles										
TOTAL REQUEST	0.00	0.00	0	0.00	0.00	100,000	100	100	100	100

By MOF:

- A
- B
- N
- P
- R
- S
- T
- U
- W
- X

III. OPERATING COST DETAILS

	MOF	FY 20 Request			FY 21 Request			FY 22	FY 23	FY 24	FY 25
		FTE (P)	FTE (T)	(\$)	FTE (P)	FTE (T)	(\$)	(\$ thous)	(\$ thous)	(\$ thous)	(\$ thous)
A. Personal Services (List all positions)											
Position Title, SR											
Other Personal Services											
Fringe Benefits											
Turnover Savings											
Subtotal Personal Service Costs		0.00	0.00	0	0.00	0.00	0	0	0	0	0
By MOF	A	0.00	0.00	0	0.00	0.00	0	0	0	0	0
	B	0.00	0.00	0	0.00	0.00	0	0	0	0	0
	N	0.00	0.00	0	0.00	0.00	0	0	0	0	0
B. Other Current Expenses (List by line item)											
Travel	A										
Office Operations and Expenses	A										
Eqpt Parts and R&M Supplies	A										
Office and Field Supplies	A					50,000	50	50	50	50	
Project Material, Equipment, Suppl	A					50,000	50	50	50	50	
Training	A										
Conferences	A										
Fuel (Vehicles, Vessels, Eqpt)	A										
Contracts for Goods and Services	A										
Subtotal Equipment				0		100,000	0	0	0	0	
By MOF	A			0		100,000	0	0	0	0	
	B			0		0	0	0	0	0	
	N			0		0	0	0	0	0	
L. Current Lease Payments (Note each lease)											
Subtotal Current Lease Payments				0		0	0	0	0	0	
By MOF	A			0		0	0	0	0	0	

**FY 21 SUPPLEMENTAL BUDGET
OPERATING BUDGET ADJUSTMENT REQUEST
DEPARTMENT OF**

	B	0	0	0	0	0	0	0	0	
	N	0	0	0	0	0	0	0	0	
M. Motor Vehicles (List Vehicles)										
Subtotal Motor Vehicles		0		0	0	0	0	0	0	
By MOF	A	0		0	0	0	0	0	0	
	B	0		0	0	0	0	0	0	
	N	0		0	0	0	0	0	0	
TOTAL REQUEST		0.00	0.00	0	0.00	0.00	100,000	100	100	100

IV. JUSTIFICATION OF REQUEST

Act 340 of the 1993 Legislative Session and signed into law on June 30, 1993 by Gov. John Waihee established the Kaho`olawe Island Reserve Commission (KIRC) which shall have policy and management oversight of the Kaho`olawe Island Reserve (Reserve). Act 49 of 2017 Legislative Session appropriated General Funds for each Fiscal Year 2017 and 2018 as part of the administration's budget. Act 113 of 2018 Legislative Session appropriated additional General Funds for FY20 to support on-island restoration efforts for Kaho`olawe. This request for additional funds for FY21 is for a continuation of funds established in Act 113 to continue for FY21. The funds will be used to support native plant materials for on-island planting, restoration supplies and materials including irrigation and water collection systems as well and transportation and logistic to move materials and supplies to Kaho`olawe

V. RELATIONSHIP OF THE REQUEST TO STATE PLAN OR FUNCTIONAL PLAN

To financially support the mandated duties of this State Commission.

VI. INFORMATION SYSTEMS AND TECHNOLOGY

Managed by an in-house administrator and independent of the State IT system, however, use state domain (.gov) for e-mail. Managed by an in-house administrator and independent of the State IT system, however, use state domain (.gov) for e-mail.

VII. IMPACT ON OTHER STATE PROGRAMS/AGENCIES

None

VIII. IMPACT ON FACILITY REQUIREMENTS (R&M, CIP)

None

IX. EXTERNAL CONFORMANCE REQUIREMENTS

Must conform to U.S.Navy certifications of specific areas and removal of newly found ordnance and terms and agreements established in 1993 Memorandum of Understanding between the United States Navy and the State of Hawaii.

X. REQUIRED LEGISLATION (Please specify appropriate statutes; i.e., HRS)

Chapter 6K, H. R. S.

XI. OTHER COMMENTS

**FY 21 SUPPLEMENTAL BUDGET
OPERATING BUDGET ADJUSTMENT REQUEST
DEPARTMENT OF**

Department Priority: KIRC 2

Program ID/Org. Code: LNR 906AA
Program Title: KIRC

Department Contact: Michael Nahoopii

Phone: 3-5020

Request Category:

- Trade-Off/Transfer (+)___ (-) ___
- Conversion of Unbudgeted Positions _____
- Fixed Cost/Entitlement _____
- Federal Fund Adjustment _____
- Governor's Initiatives _____
- Health, Safety, Court Mandates _____
- Full Year Funding for New Positions _____
- Second Year Funding _____
- Other X

I. TITLE OF REQUEST:

Description of Request:

II. OPERATING COST SUMMARY

	FY 20 Request			FY 21 Request			FY 22	FY 23	FY 24	FY 25
	FTE (P)	FTE (T)	(\$)	FTE (P)	FTE (T)	(\$)	(\$ thous)	(\$ thous)	(\$ thous)	(\$ thous)
A. Personal Services										
B. Other Current Expenses						500,000	500	500	500	500
C. Equipment										
L. Current Lease Payments										
M. Motor Vehicles										
TOTAL REQUEST	0.00	0.00	0	0.00	0.00	500,000	500	500	500	500

By MOF:

- A
- B
- N
- P
- R
- S
- T
- U
- W
- X

III. OPERATING COST DETAILS

	MOF	FY 20 Request			FY 21 Request			FY 22	FY 23	FY 24	FY 25
		FTE (P)	FTE (T)	(\$)	FTE (P)	FTE (T)	(\$)	(\$ thous)	(\$ thous)	(\$ thous)	(\$ thous)
A. Personal Services (List all positions)											
Position Title, SR											
Other Personal Services											
Fringe Benefits											
Turnover Savings											
Subtotal Personal Service Costs		0.00	0.00	0	0.00	0.00	0	0	0	0	0
By MOF	A	0.00	0.00	0	0.00	0.00	0	0	0	0	0
	B	0.00	0.00	0	0.00	0.00	0	0	0	0	0
	N	0.00	0.00	0	0.00	0.00	0	0	0	0	0
B. Other Current Expenses (List by line item)											
Travel	A										
Office Operations and Expenses	A										
Eqpt Parts and R&M Supplies	A					50,000	50	50	50	50	
Office and Field Supplies	A					50,000	50	50	50	50	
Project Material, Equipment, Suppl	A										
Training	A										
Conferences	A										
Fuel (Vehicles, Vessels, Eqpt)	A					50,000	50	50	50	50	
Contracts for Goods and Services	A					350,000	350	350	350	350	
Subtotal Equipment				0		500,000	500	500	500	500	
By MOF	A			0		500,000	500	500	500	500	
	B			0		0	0	0	0	0	
	N			0		0	0	0	0	0	
L. Current Lease Payments (Note each lease)											
Subtotal Current Lease Payments				0		0	0	0	0	0	
By MOF	A			0		0	0	0	0	0	

**FY 21 SUPPLEMENTAL BUDGET
OPERATING BUDGET ADJUSTMENT REQUEST
DEPARTMENT OF**

	B	0			0	0	0	0	0
	N	0			0	0	0	0	0
M. Motor Vehicles (List Vehicles)									
Subtotal Motor Vehicles		0			0	0	0	0	0
By MOF	A	0			0	0	0	0	0
	B	0			0	0	0	0	0
	N	0			0	0	0	0	0
TOTAL REQUEST		0.00	0.00		0.00	0.00	500,000	500	500

IV. JUSTIFICATION OF REQUEST

Act 340 of the 1993 Legislative Session and signed into law on June 30, 1993 by Gov. John Waihee established the Kaho`olawe Island Reserve Commission (KIRC) which shall have policy and management oversight of the Kaho`olawe Island Reserve (Reserve). Act 49 of 2017 Legislative Session appropriated General Funds for each Fiscal Year 2017 and 2018 as part of the administration's budget. Act 113 of 2018 Legislative Session appropriated additional General Funds for FY20 to support on-island restoration efforts for Kaho`olawe. This request for additional funds for FY21 is to support on-island operations and logistical support. The additional funding is necessary to support volunteers, contractors and KIRC staff while on Kaho`olawe. This includes housing, meals, on-island transportation, repair and maintenance of buildings and infrastructure as well as safety equipment and supplies. Additionally, the funds are necessary to support the operations, repair and maintenance of the KIRC's landing craft, which is the primary means of transporting people, supplies and equipment to Kaho`olawe.

V. RELATIONSHIP OF THE REQUEST TO STATE PLAN OR FUNCTIONAL PLAN

To financially support the mandated duties of this State Commission.

VI. INFORMATION SYSTEMS AND TECHNOLOGY

Managed by an in-house administrator and independent of the State IT system, however, use state domain (.gov) for e-mail. Managed by an in-house administrator and independent of the State IT system, however, use state domain (.gov) for e-mail.

VII. IMPACT ON OTHER STATE PROGRAMS/AGENCIES

None

VIII. IMPACT ON FACILITY REQUIREMENTS (R&M, CIP)

None

IX. EXTERNAL CONFORMANCE REQUIREMENTS

Must conform to U.S.Navy certifications of specific areas and removal of newly found ordnance and terms and agreements established in 1993 Memorandum of Understanding between the United States Navy and the State of Hawaii.

X. REQUIRED LEGISLATION (Please specify appropriate statutes; i.e., HRS)

Chapter 6K, H. R. S.

XI. OTHER COMMENTS

**FY 21 SUPPLEMENTAL BUDGET
OPERATING BUDGET ADJUSTMENT REQUEST
DEPARTMENT OF**

Department Priority: KIRC 3

Program ID/Org. Code: LNR 906AA
Program Title: KIRC

Department Contact: Michael Nahoopii

Phone: 3-5020

Request Category:

Trade-Off/Transfer (+)___ (-) ___
Conversion of Unbudgeted Positions ___
Fixed Cost/Entitlement ___
Federal Fund Adjustment ___
Governor's Initiatives ___
Health, Safety, Court Mandates ___
Full Year Funding for New Positions ___
Second Year Funding ___
Other X___

I. TITLE OF REQUEST:

Description of Request:
Request for additional personnel for Management and Restoration of Kaho`olawe

II. OPERATING COST SUMMARY

	FY 20 Request			FY 21 Request			FY 22	FY 23	FY 24	FY 25
	FTE (P)	FTE (T)	(\$)	FTE (P)	FTE (T)	(\$)	(\$ thous)	(\$ thous)	(\$ thous)	(\$ thous)
A. Personal Services					1.00	35,000	35	35	35	35
B. Other Current Expenses										
C. Equipment										
L. Current Lease Payments										
M. Motor Vehicles										
TOTAL REQUEST	0.00	0.00	0	0.00	1.00	35,000	35	35	35	35

By MOF:

A					1.00	35,000	35.0	35.0	35.0	35.0
B										
N										
P										
R										
S										
T										
U										
W										
X										

III. OPERATING COST DETAILS

	MOF	FY 20 Request			FY 21 Request			FY 22	FY 23	FY 24	FY 25
		FTE (P)	FTE (T)	(\$)	FTE (P)	FTE (T)	(\$)	(\$ thous)	(\$ thous)	(\$ thous)	(\$ thous)
A. Personal Services (List all positions) Position Title, SR Kaho`olawe Island Reserve Specialist III	A					1.00	35,000	35	35	35	35
Other Personal Services											
Fringe Benefits											
Turnover Savings											
Subtotal Personal Service Costs		0.00	0.00	0	0.00	1.00	35,000	35	35	35	35
By MOF	A	0.00	0.00	0	0.00	1.00	35,000	35	35	35	35
	B	0.00	0.00	0	0.00	0.00	0	0	0	0	0
	N	0.00	0.00	0	0.00	0.00	0	0	0	0	0
B. Other Current Expenses (List by line item) Travel	A										
Office Operations and Expenses	A										
Eqpt Parts and R&M Supplies	A										
Office and Field Supplies	A										
Project Material, Equipment, Supplies	A										
Training	A										
Conferences	A										
Fuel (Vehicles,Vessels,Eqpt)	A										
Contracts for Goods and Services	A										
Subtotal Equipment				0			0	0	0	0	0
By MOF	A			0			0	0	0	0	0
	B			0			0	0	0	0	0
	N			0			0	0	0	0	0
L. Current Lease Payments (Note each lease)											
Subtotal Current Lease Payments				0			0	0	0	0	0
By MOF	A			0			0	0	0	0	0
	B			0			0	0	0	0	0
	N			0			0	0	0	0	0
M. Motor Vehicles (List Vehicles)											
Subtotal Motor Vehicles				0			0	0	0	0	0

**FY 21 SUPPLEMENTAL BUDGET
OPERATING BUDGET ADJUSTMENT REQUEST
DEPARTMENT OF**

By MOF	A	0	0	0	0	0	0	0	0		
	B	0	0	0	0	0	0	0	0		
	N	0	0	0	0	0	0	0	0		
TOTAL REQUEST		0.00	0.00	0	0.00	1.00	35,000	35	35	35	35

IV. JUSTIFICATION OF REQUEST

Act 340 of the 1993 Legislative Session and signed into law on June 30, 1993 by Gov. John Waihee established the Kaho`olawe Island Reserve Commission (KIRC) which shall have policy and management oversight of the Kaho`olawe Island Reserve (Reserve). Act 49 of 2017 Legislative Session appropriated General Funds for each Fiscal Year 2017 and 2018 as part of the administration's budget. The KIRC has observed a recent increase in the unpredictability and severity of weather and ocean conditions in the waters surrounding Maui and Kaho`olawe most likely due to climate changes and global warming, which has resulted in an increased need for manpower to safely and effectively operate the KIRC ocean vessel between the islands and to support critical safety and logistic functions for KIRC. Additional funds are requested to establish a Kaho`olawe Island Reserve Specialist III (KIR Specialist III) position to support KIRC boat safety and logistic operations.

V. RELATIONSHIP OF THE REQUEST TO STATE PLAN OR FUNCTIONAL PLAN

To financially support the mandated duties of this State Commission.

VI. INFORMATION SYSTEMS AND TECHNOLOGY

Managed by an in-house administrator and independent of the State IT system, however, use state domain (.gov) for e-mail. Managed by an in-house administrator and independent of the State IT system, however, use state domain (.gov) for e-mail.

VII. IMPACT ON OTHER STATE PROGRAMS/AGENCIES

None

VIII. IMPACT ON FACILITY REQUIREMENTS (R&M, CIP)

None

IX. EXTERNAL CONFORMANCE REQUIREMENTS

Must conform to U.S.Navy certifications of specific areas and removal of newly found ordnance and terms and agreements established in 1993 Memorandum of Understanding between the United States Navy and the State of Hawaii.

X. REQUIRED LEGISLATION (Please specify appropriate statutes; i.e., HRS)

Chapter 6K, H. R. S.

XI. OTHER COMMENTS

**LEGISLATIVE SUPPLEMENTAL GENERAL FUND BUDGET REQUEST FOR 2020
KAHO`OLAWA ISLAND RESERVE COMMISSION
November 2019**

1. Request to increase the KIRC’s general fund appropriations in LNR 906 by \$500,000 for KIRC’s on-island operations and logistical support.

Background: In the State’s FY18/FY19 approved biennium budget, Act 49 SLH 2017, the KIRC was authorized 15 temporary positions and \$1,065,147 (FY18) and \$1,097,047 (FY19) in general funds for the management and restoration of the Kaho`olawe Island Reserve. In FY20, Act 5 SLH 2019 authorized 15 temporary positions and \$1,198,159 (FY20 and FY21) in general funds and Act 113 SLH 2019 added one additional temporary position (FY20 and FY21) and \$100,000 (FY20) in general funds.

These funds cover KIRC personnel and operating the KIRC Maui Office. The additional \$100,000 in FY20 is being used for operating cost and regular maintenance for the KIRC Landing Craft, maintenance and utilities for the Kihei Boathouse and for outreach.

Current distribution of general funds in LNR906 for KIRC from Act 5 and Act 113 SHL 2019

Category	FY20	FY21	Note
Personnel (Act 5)	\$985,169	\$985,169	• 16 temporary positions including CRPC
Commission meeting expenses and travel (Act 5)	\$30,000	\$30,000	• Commissioner and staff travel; other travel related and State-wide meeting expenses
Office lease (Act 5)	\$93,000	\$93,000	• KIRC Maui Office lease
Office Operation (Act 5)	\$90,000	\$90,000	• Office operations: \$16,000 • Utilities and balance of office rent: \$69,000 • Computer Support: \$5,000
KIRC Landing Craft Repairs/Operations (Act 113)	\$50,000	\$0.00	• Funding provided for FY20 only
Kihei Boathouse Operations (Act 113)	\$40,000	\$0.00	• Includes operations and support of vehicles; utilities, upkeep and support for Kihei Boathouse; and field and safety equipment • Funding provided for FY20 only
Education and Outreach (Act 113)	\$10,000	\$0.00	• Printing and publication of KIRC newsletters, annual report and educational materials;
Total	\$1,298,169	\$1,198,169	

The general funds detailed above do not provide for the additional KIRC expense of maintaining field operations and the Kaho`olawe Base Camp. These additional requirements are currently being funded from a combination of short-term, competitive grants and KIRC’s limited trust funds.

The Kaho`olawe Native Dryland Restoration CIP Project provided funds to build native dryland forest areas on Kaho`olawe. The funding provided plants, materials and manpower for native seedlings out-planting on the leeward hardpan areas of Luamakika. The funding also provided for on-island support (meals, housing and on-island transportation) for the field crews, volunteers and KIRC staff to conduct and manage the out-planting project.

Other KIRC expenses currently being funded by other sources

Category	FY20	FY21 (est)	Note
Base Camp Operations and Support Services	\$416,000	\$275,000	<ul style="list-style-type: none"> Contract services to operate and maintain the Honokanai`a Base Camp including power and water generation; facilities and vehicle repair and maintenance; and food service. Funded by Native Dryland Forest CIP Project expiring FY20. Reduction in FY21 estimate due to reduction in manpower as CIP funding ends.
Honokanai`a Supplies	\$158,000	\$100,000	<ul style="list-style-type: none"> Supplies and materials including provisions; consumables and repair and maintenance parts and supplies. Funded by Native Dryland Forest CIP Project expiring FY20. Reduction in FY21 estimate due to reduction in services as CIP funding ends.
Fuel (Vehicle, Vessel, Equipment)	\$50,000	\$25,000	<ul style="list-style-type: none"> Funded by Native Dryland Forest CIP Project expiring FY20
Radio/Communications Contract	\$83,000	\$60,000	<ul style="list-style-type: none"> Provides radio, telephone and internet connection on Kaho`olawe Reduction in FY21 estimate due to planned renegotiation of contract. Funded by Native Dryland Forest CIP Project expiring FY20
Total	\$707,000	\$460,000	

Request: Additional \$500,000 in general funds (LNR906) for fiscal years 2021-2022 for KIRC on-island operations and vessel support.

Justification: Even though Act 113 SLH 2019 authorized an additional \$100,000 in general funds for operating expenses for fiscal year 2020, funds are still needed for operating expenses for fiscal year 2021 and beyond as the current funding sources end. Currently, these services have been supported by other funding sources including trust funds and CIP funds. These funding sources will be ending in Fiscal

Year 2020 and additional general funds will be needed in fiscal year 2021 to continue the KIRC’s core mission of on-island restoration work on Kaho`olawe.

The additional funding is necessary to support volunteers, contractors and KIRC staff while on Kaho`olawe including housing, meals, on-island transportation, repair and maintenance of buildings and infrastructure as well as safety equipment and supplies. Additionally, the funds are necessary to support the operations, repair and maintenance of the KIRC’s landing craft, which is the primary means of transporting people, supplies and equipment to Kaho`olawe.

The following is a summary of how the requested funds will be utilized:

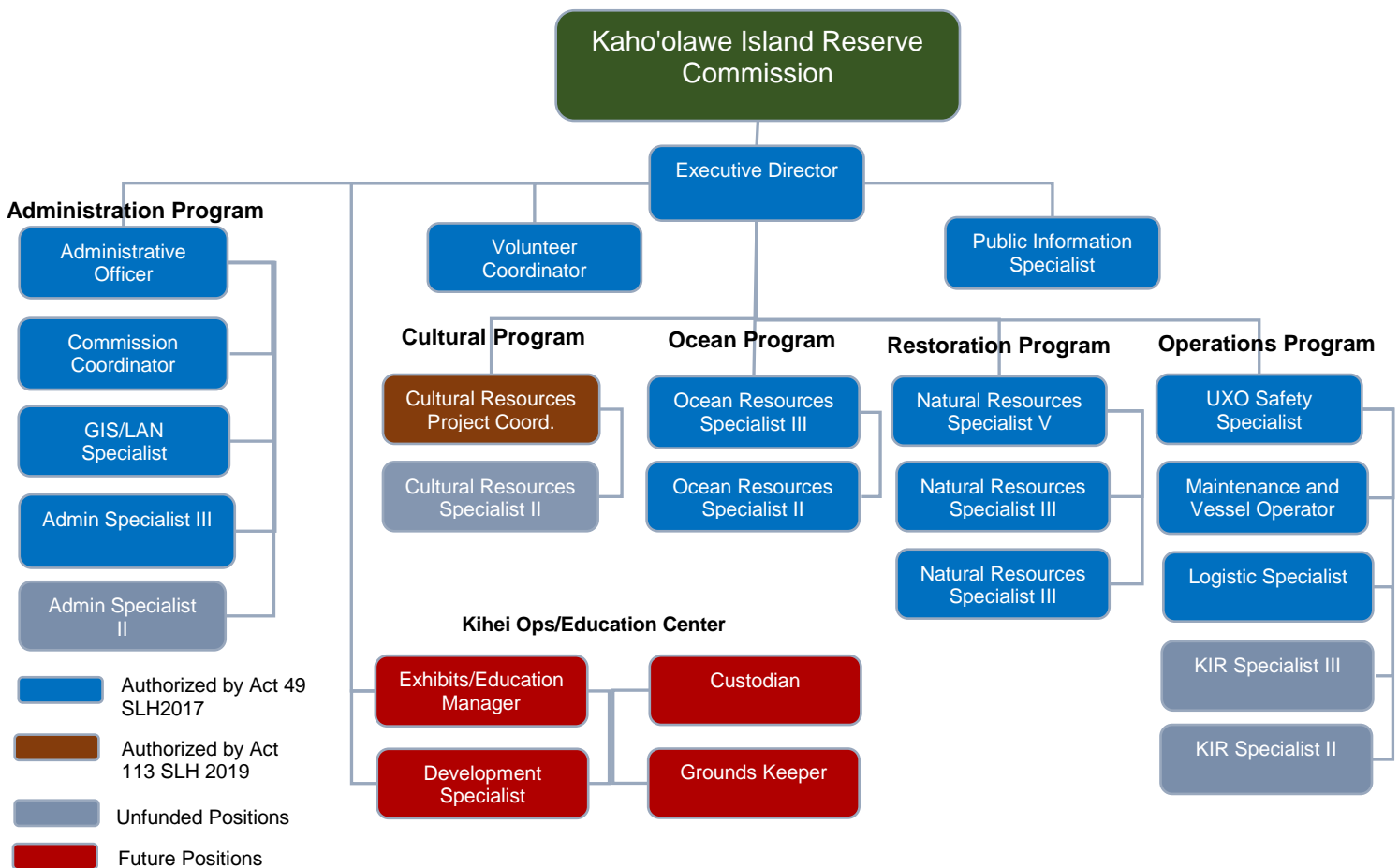
KIRC Expenditure Report	State Form A Category	FY20 Estimates	Allocation of FY21 Funds
Base Camp Operations and Support Services Contract	Other Current Expenses: Contract for Goods and Services	\$416,000	\$275,000
KIRC Landing Craft Repairs/Operations	Other Current Expenses: Contract for Goods and Services	\$50,000	\$40,000
Honokanai`a Supplies	Other Current Expenses: Base Camp consumables and supplies	\$158,000	\$100,000
Fuel (Vehicle, Vessel, Equipment)	Other Current Expenses; Fuel (Vehicles, Vessel, Eqpt)	\$50,000	\$25,000
Radio/Communications Contract	Other Current Expenses: Contract for Goods and Services	\$83,000	\$60,000
	Total	\$689,000	\$500,000

The KIRC is also seeking direct grants, donations and other charitable contributions to help fund expenses not covered by either current general fund appropriations or this request such as native plant seedlings, irrigation materials and supplies, soil amendments, erosion control materials and equipment to support restoration planting projects on Kaho`olawe as described in “Kaho`olawe Island Reserve Commission Financial Self-Sufficiency and Sustainability Plan” submitted to the state legislature in December 2016.

2. Request \$72,000 in general funds in LNR 906 for Fiscal Year 2020-2021 for a Kaho`olawe Island Reserve Specialist II (KIR II) and Kaho`olawe Island Reserve Specialist III (KIR III).

Background: In 2017 legislative request, the KIRC initially submitted a request for general funding for 19 temporary positions indicated in blue, brown and gray as seen below in the KIRC Commission’s approved organizational chart below. The positions shown in red are new positions for KIRC’s future expansion. Act 49 SLH 2017 authorized 15 temporary KIRC positions, which were the currently filled positions shown in blue below. Act 140 SLH 2018 authorized a permanent Cultural Resource Coordinator as shown in brown. The currently vacant and authorized positions shown in gray were currently unfunded.

The Kaho`olawe island Reserve Specialists support all KIRC field programs by operating and maintaining KIRC field assets, equipment, vehicles and machinery as well as acts or assists as Field Team Leaders for KIRC volunteer work groups on Kaho`olawe. The positions also serve as KIRC boat crew and field escorts as needed. The positions are based at the KIRC Office on Maui and involve extensive fieldwork on Kaho`olawe requiring extended overnight stays. They are temporary exempt appointments subject to extensions authorized by the KIRC.



Request: Appropriate \$72,000 in general funds for fiscal year 2020-2021 to fund two full-time equivalent (2.00 FTE) positions in LNR 906 for a Kaho`olawe Island Reserve Specialist II (KIR II) and a Kaho`olawe Island Reserve Specialist III (KIR III) positions.

Justification: Due to the vacancy of the Kaho`olawe Island Reserve Specialist II and III positions in 2016, the KIRC was not able to include these positions with those authorized in Act 49. These positions are necessary to support necessary safety and logistic functions as well as on-island restoration efforts and sustainability field projects while on Kaho`olawe and act as boat crew while on KIRC vessels.

These positions are critically vital as the KIRC has observed a recent increase in unpredictability and severity of weather and ocean conditions in the waters surrounding Maui and Kaho`olawe most likely due to climate change and global warming, which has resulted in an increased need for additional manpower to safely and effectively operate the KIRC ocean vessel. The KIRC operates a landing craft between Maui and Kaho`olawe to transport staff, volunteers, materials and equipment between the island to support the on-island restoration efforts. The current boat crew consists of the Maintenance and Vessel Operator and the Logistic Specialist, other KIRC staff augment the boat crew when available. There is a need for additional manpower to assist with handling cargo, operating lines and equipment and safety lookouts as staff have been encountering rougher weather conditions and more boat traffic between Kaho`olawe and Maui.

The current Kaho`olawe Field teams also need additional field support as staff have been successful in expanding restoration efforts to create more native dryland forest habitats, expand beach restoration and shoreline protection efforts, cultivate food sustainability and increase on-island water generation, collection, storage and distribution systems.